

ImageSend



Master Image Read-in and File Transfer

ImageSend is a file transfer program designed to simplify the electronic submission of masters to replication plants.

ImageSend consists of two fully automated processes. The read-in process utilizes Eclipse's industry-standard analysis and copy engine. Using analysis rules defined by the receiving plant, ImageSend simultaneously copies, analyzes, and protects the master image with checksums. The FTP process then sends the complete master image including logfiles and metadata to the FTP address defined by the receiving plant. When masters fail read-in, log-files can be sent to the plant for review.

Eclipse Address Book files used by ImageSend are created by replication plants and are keyed to that plant's unique Plant_ID. The address book file contains FTP server and login information, a configurable metadata worksheet, and custom analysis rules. ImageSend supports multiple address book entries, but electronic masters created by ImageSend can only be used at the plant that provided the address book file. This ensures that images are not usable by anyone other than the authorized recipient.

Features

PROVEN COPY AND ANALYSIS ENGINE

ImageSend uses Eclipse's industry-standard analysis and copy engine to ensure that every master is thoroughly checked before sending. Analysis rules are created by the receiving plant and are delivered as part of their *plant address* information. Analysis log files are created and sent with every image for analysis by the receiving plant. Log files from failed masters are sent without the master image.

IMAGE PROTECTION

ImageSend creates and sends images using standard DDP protocol and protects them with Eclipse's widely-used ImageIntegrity checksum. This ensures every image is received intact by the plant. This same ImageIntegrity checksum maintains protection of the image as it moves through the glass mastering process.

SECURE AND PRIVATE

For security, received images can only be read by the plant that created the *plant address* used to read-in the master. Read-in is done using any current ImageCopy program inside the plant where the image is 'unlocked'.

SIMPLE-TO-USE

ImageSend is a single-screen application that allows for simple 'Go/No Go' operation. The operator only needs to select the master image source and the *plant address* from the address book. On completion of the read-in and analysis, good masters are moved to the FTP queue to be sent sequentially.

ATTACHMENTS AND METADATA.

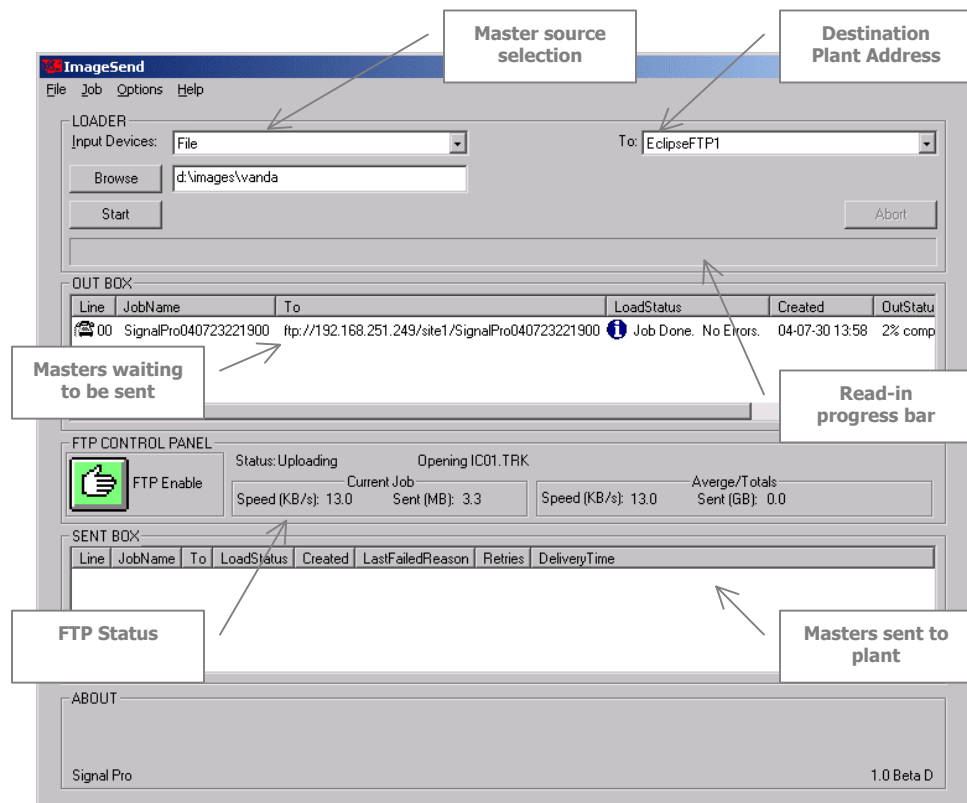
Receiving plants can include a customizable form as part of their plant address information. Any included forms are opened automatically to allow the ImageSend operator to fill-in any required or optional information associated with the master. Examples of this are: purchase order, job identification, or other tracking information. Other files may also be attached to the master before sending.

System Requirements:

- Windows 2000/XP
- P4 2Ghz or higher
- Internet Connection
- Available USB or Parallel Port
- Supported read-in drive¹

Supported Formats:

- All CD Formats
- All DVD Formats
- Source can tape, disk or file¹



¹ List of support read-in drives can be found at <http://www.eclipsedata.com/products/peripherals/matrix.htm>